



Madison, Wisconsin

INDEX OF SHEETS

| SHEET NO. | TITLE |
|------------------------------|-------------------|
| 1 | |
| D1-D2 | NOTES AND DETAILS |
| P1-P11 | PLANS |
| NO MAINTENANCE PLAN REQUIRED | |

CITY OF MADISON

CITY ENGINEERING DIVISION

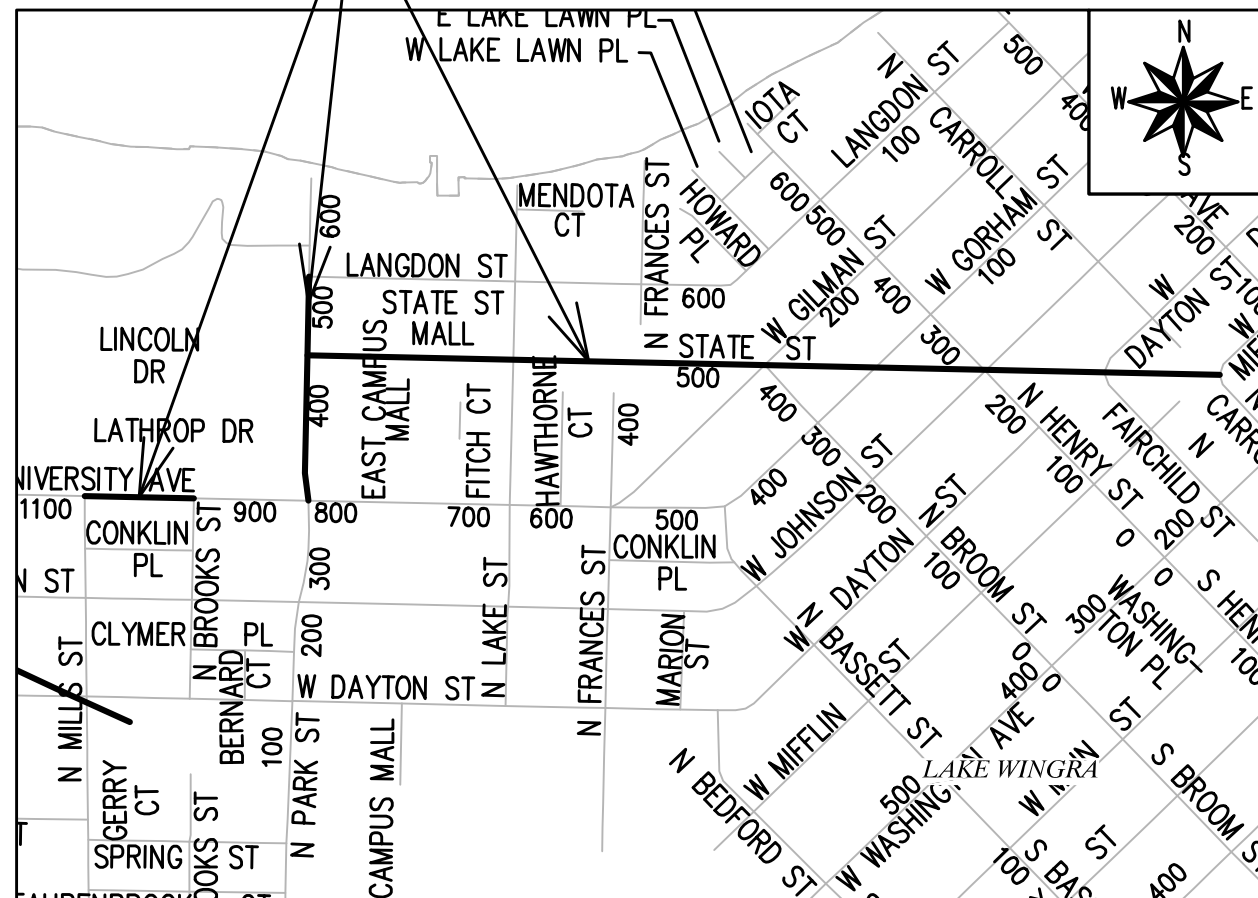
DEPARTMENT OF PUBLIC WORKS

PLAN OF PROPOSED IMPROVEMENT

STATE STREET SIDEWALK REPAIRS AND NORTH PARK STREET SIDEWALK AND TERRACE ASSESSMENT DISTRICT-2021

PROJECT
LOCATION

CITY PROJECT NO. 13324
CONTRACT NO. 8584



| CONVENTIONAL SIGNS | |
|---|---------|
| FIELD VERIFY ALL UTILITY LOCATIONS | |
| GAS | — G — |
| STORM SEWER | — ST — |
| SANITARY SEWER | — SAN — |
| WATER | — W — |
| BURIED ELECTRIC | — E — |
| OVERHEAD ELECTRIC | — OH — |
| POWER POLE | □ |
| ADA COMPLIANT RAMP W/ DETECTABLE WARNING FIELD | ▣ |
| COMBUSTIBLE FLUIDS | ☀ |

NOTES:

ALL GUTTERS SHALL DRAIN WITH A MINIMUM GRADE OF 0.50% TOWARD STORM SEWER INLETS.

SIDEWALK RAMPS AND CURB THRU SIDEWALK RAPMS SHALL HAVE A MAXIMUM SLOPE OF 1" PER 12", SIDEWALK AND CURB RAMPS SHALL BE CONSTRUCTED WITH A SIDE SLOPE OF 1.50%. SIDEWALK SHALL HAVE A MINIMUM LONGITUDINAL SLOPE OF 0.50% AND A MAXIMUM LONGITUDINAL SLOPE OF 5.00% EXCEPT WHERE STREET GRADES EXCEED 5.00%.

PUBLIC IMPROVEMENT PROJECT APPROVED

APPROVED DATE: MAY 18, 2021

BY THE COMMON COUNCIL OF MADISON, WISCONSIN

PUBLIC IMPROVEMENT DESIGN APPROVED BY:

W. Greg Frise

May 13, 2021

City Engineer

Date

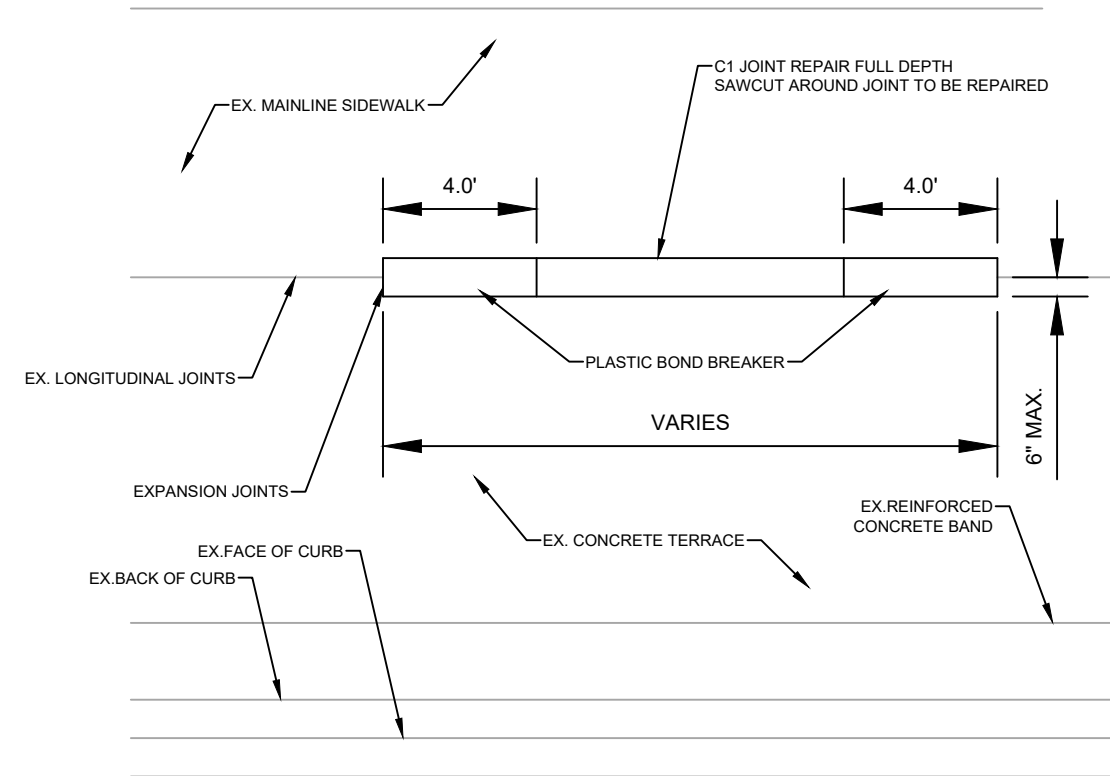
STREET DESIGNED BY:



ELECTRICAL DESIGNED BY:



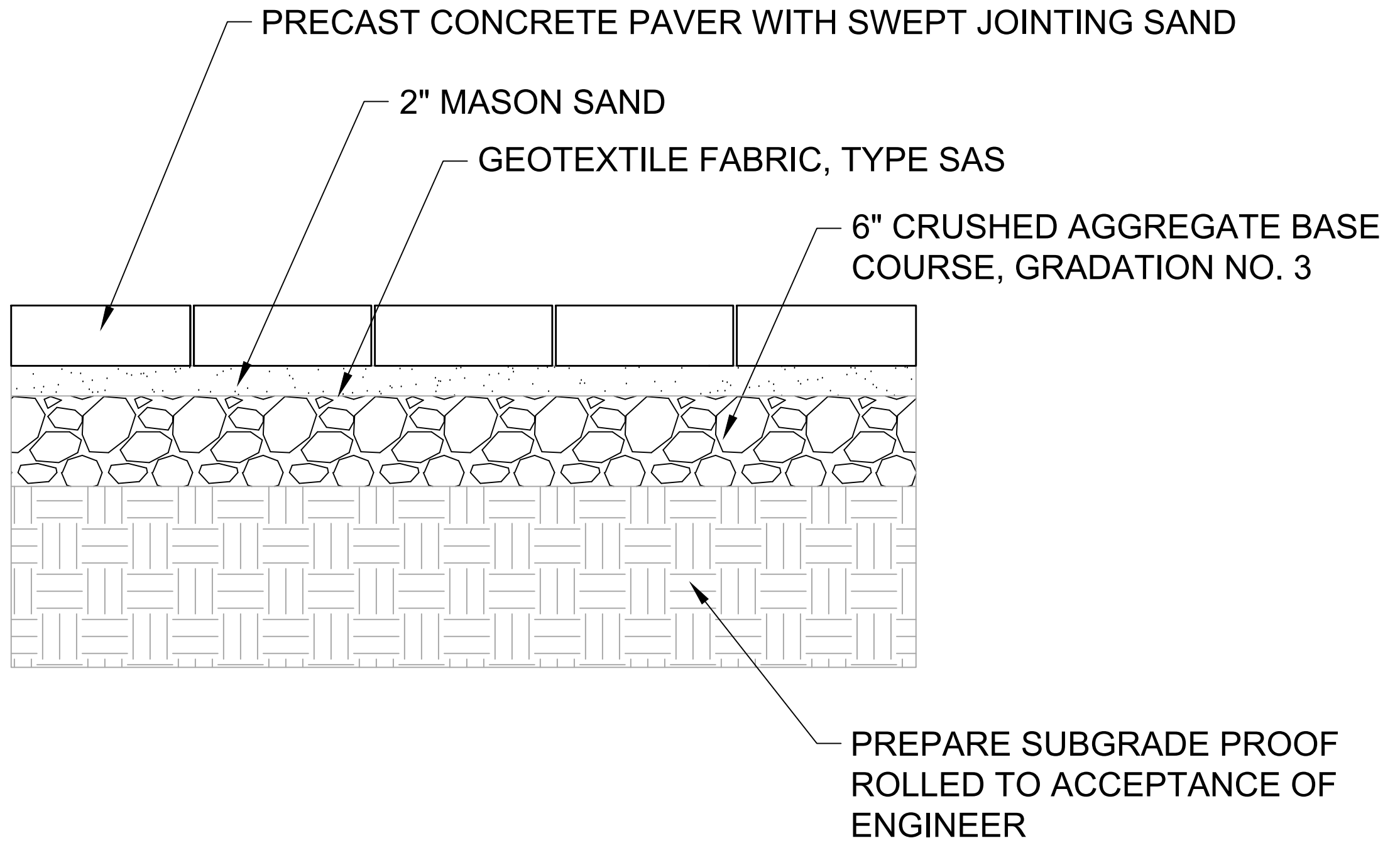
1. ALL WORK IS TO BE COORDINATED WITH ADJACENT BUSINESSES. PROVIDE MINIMUM OF 48 HOURS PRIOR TO WORKING IN FRONT OF A BUSINESSES.
2. MAINTAIN PEDESTRIAN ACCESS ALONG THE MAINLINE SIDEWALK AND ACCESS TO ALL BUSINESSES AT ALL TIMES.
3. INSTALL TEMPORARY RAMPS FOR USE BY PEDESTRIANS WHEN REPLACING EXISTING RAMPS. TEMPORARY RAMPS SHALL BE CONSIDERED INCIDENTAL TO TRAFFIC CONTROL BID ITEM.
4. CAULK THE ENTIRE LENGTH OF THE 2 LONGITUDINAL EXPANSION JOINTS ALONG THE TERRACE (BETWEEN TERRACE & MAINLINE SIDEWALK AND BETWEEN TERRACE & CONCRETE BAND BEHIND CURB). ALSO CAULK ADDITIONAL JOINTS NOTED ON PLAN. WIDTH OF JOINTS TO BE CAULKED WILL VARY UP TO AS WIDE AS 2 INCHES.
5. IT IS RECOMMENDED THAT JOINT CAULKING BE DONE IN THE MORNING BEFORE 11 AM. CLOSURE OF SIDEWALK CAFES TO PERFORM JOINT CAULKING WORK WILL NOT BE PERMITTED, AND MOST CAGES ARE SET UP FOR LUNCH SERVICE.
6. REMOVE TEMPORARY ASPHALT REPAIRS FROM JOINTS TO BE CAULKED, WHICH WILL BE PAID UNDER REMOVE ASPHALT JOINT BID ITEM, REMOVAL OF ASPHALT IN JOINTS THAT WILL BE REPAIRED OR FORM PARTIAL DEPTH REPAIR AREAS SHALL BE CONSIDERED INCIDENTAL TO THOSE BID ITEMS.
7. CURB AND GUTTER THAT IS TO BE REMOVED AND REPLACED IS EITHER ADJACENT TO CONCRETE PAVEMENT, OR INTEGRAL WITH THE CONCRETE PAVEMENT, THE PAVEMENT WILL NEED TO BE SAWCUT PRIOR TO REMOVAL AND THE NEW CURB IS TO BE TIED THE EXISTING PAVEMENT PER S.D.D.3.10. SAW CUTTING AND TIE BARS ARE INCIDENTAL TO REMOVE AND REPLACE CONCRETE CURB AND GUTTER ITEM.
8. AREAS OF CONCRETE REMOVAL ARE TO BE PROTECTED WITH BARRICADES , BARRELS, ETC, OR COVERED UNTIL THE CONCRETE CAN BE POURED THE FOLLOWING DAY, IF CONCRETE WONT BE POURED THE FOLLOWING DAY, THE CONTRACTOR SHALL FILL OR COVER REMOVED AREAS SO THAT THEY CAN BE SAFELY USED BY PEDESTRIANS OR AS SIDEWALK CAFE SPACE UNTIL THE CONCRETE IS POURED.
9. NO CONCRETE POURS ARE TO TAKE PLACE ON A FRIDAY IN AREAS THAT ARE USED FOR SIDEWALK CAFES OR VENDOR SPACE.



C1 LONGITUDINAL JOINT REPAIR DETAIL
NOT TO SCALE

1. ALL ASPECTS OF THE TRANSVERSE JOINT REPAIR ARE THE SAME AS LONGITUDINAL EXCEPT THE BOND BREAKERS ARE NOT USED AND THE EXPANSION JOINT ONLY BE INSTALLED ADJACENT TO THE TERRACE CONCRETE.
2. INSTALL BOND BREAKER FOR FULL LENGTH OF JOINT IF THE REPAIR IS LESS THAN 4' IN LENGTH.
3. JOINT REPAIR WIDTH SHALL BE A MAXIMUM OF 6" ON EITHER SIDE OF THE EXISTING EXPANSION JOINT. MOST REPAIRS WILL BE ON ONE SIDE OF THE EXISTING JOINT. IF ONLY ON SIDE IS REPAIRED, MAINTAIN THE EXPANSION JOINT IN ITS CURRENT LOCATION.
4. C1 CONCRETE JOINT REPAIR FULL DEPTH TO BE PAID PER L.F. ASSUMING A REPAIR WIDTH OF 6". IF BOTH SIDES OF AN EXISTING JOINT ARE TO BE REPAIRED, THE JOINT REPAIR SHALL BE PAID 2 TIMES LENGTH

| | | | | | |
|--|-------|-------|-------|-------|-------|
| 13324 | 13324 | 13324 | 13324 | 13324 | 13324 |
| NOTES & DETAILS | | | | | |
| STATE ST SIDEWALK REPAIR & N PARK ST SIDEWALK & TERRACE REPAIR MADISON, WI | | | | | |
| M:\DESIGN\Projects\13324\CAD\Plan Sheets\13324-D Sheets.dwg | | | | | |
| | | | | | |
| 13324 | | | | | |
| D-1 | | | | | |



PRECAST CONCRETE PAVERS
NOT TO SCALE

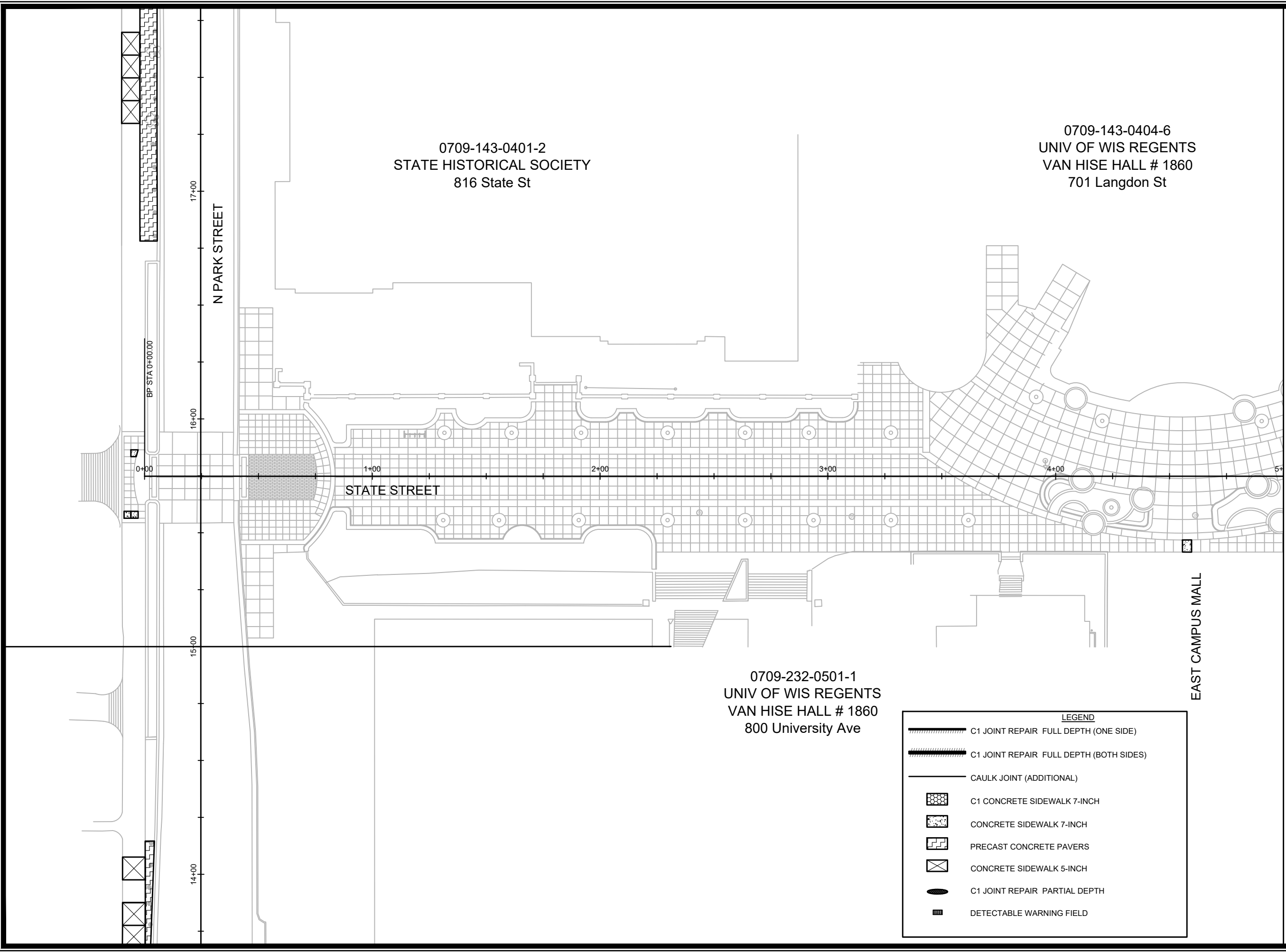
GENERAL NOTES:

1. PAVERS SHALL BE DRY LAID.
2. BASE SHALL BE FIRMLY COMPACTED TO MINIMIZE SHIFTING, SINKING, AND FROST HEAVE.

| | | | |
|------------------|----------|--------------------|------------|
| MARK | REVISION | DATE | BY |
| 13324 | | 9/12/2021 10:25 PM | |
| Designed By: ### | | | |
| | | | Scale: D-2 |

13324
 STATE ST SIDEWALK REPAIR & N PARK ST SIDEWALK & TERRACE REPAIR MADISON, WI
 M:\DESIGN\Projects\13324\CAD\Plan Sheets\13324-D Sheets.dwg
 CONTRACT NO: 8584





0709-143-0401-2
 STATE HISTORICAL SOCIETY
 816 State St


0709-143-0404-6
 UNIV OF WIS REGENTS
 VAN HISE HALL # 1860
 701 Langdon St

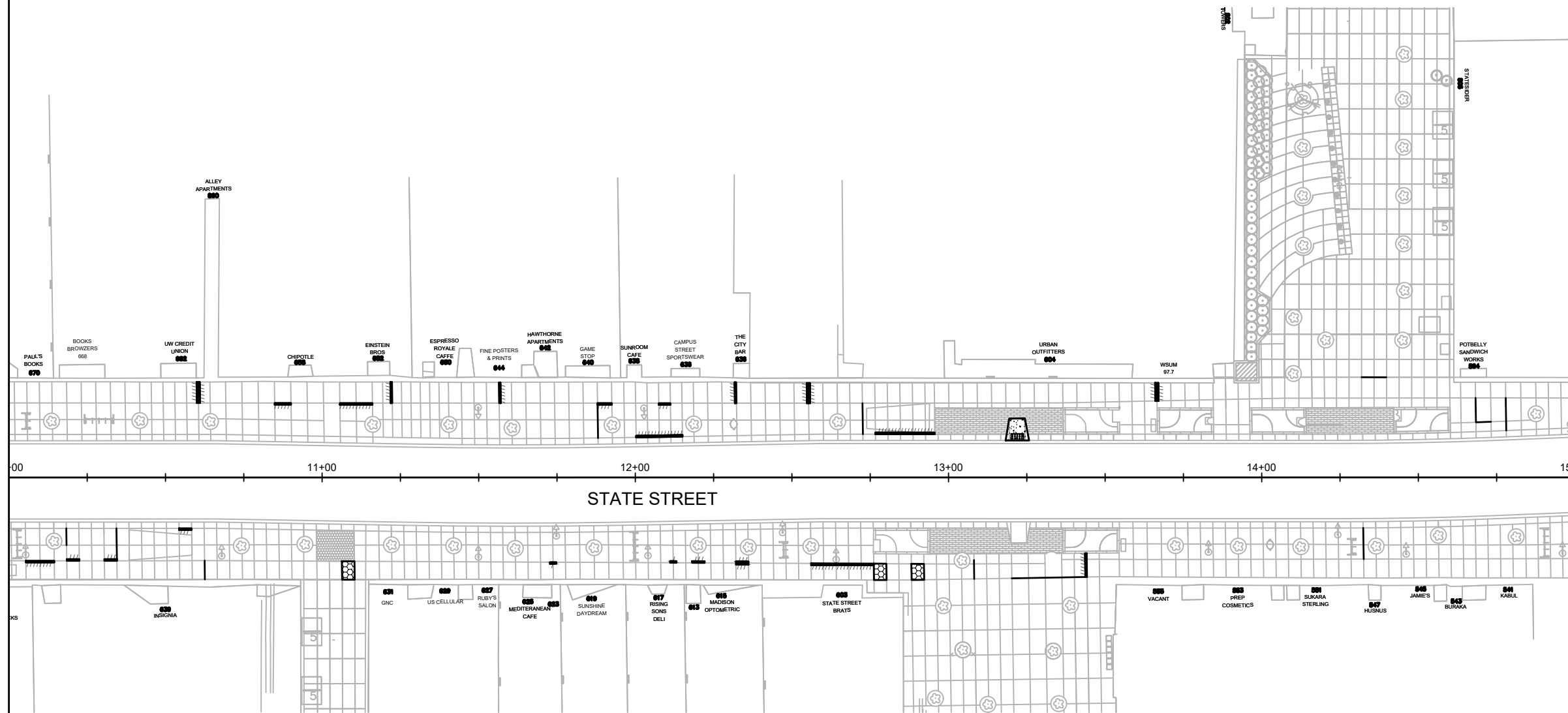
0709-232-0501-1
 UNIV OF WIS REGENTS
 VAN HISE HALL # 1860
 800 University Ave

| LEGEND | |
|--------|---|
| | C1 JOINT REPAIR FULL DEPTH (ONE SIDE) |
| | C1 JOINT REPAIR FULL DEPTH (BOTH SIDES) |
| | CAULK JOINT (ADDITIONAL) |
| | C1 CONCRETE SIDEWALK 7-INCH |
| | CONCRETE SIDEWALK 7-INCH |
| | PRECAST CONCRETE PAVERS |
| | CONCRETE SIDEWALK 5-INCH |
| | C1 JOINT REPAIR PARTIAL DEPTH |
| | DETECTABLE WARNING FIELD |

MATCH LINE 5+00.00



|  13324 P-1 | PLANS - STATE STREET STATE ST SIDEWALK REPAIR & N PARK ST SIDEWALK & TERRACE REPAIR MADISON, WI <small>M:\DESIGN\Projects\13324\CAD\Plan Sheets\13324-P Sheets_StateSt.dwg</small> | 13324 8584 CONTRACT NO: | | | | | | | | | | | | | | | | | | | | |
|--|--|-------------------------------|------|----------|------|----|--|--|--|--|--|--|--|--|--|--|--|--|--|--|--|--|
| <table border="1" style="width: 100%; border-collapse: collapse; font-size: small;"> <thead> <tr> <th>MARK</th> <th>REVISION</th> <th>DATE</th> <th>BY</th> </tr> </thead> <tbody> <tr> <td> </td> <td> </td> <td> </td> <td> </td> </tr> <tr> <td> </td> <td> </td> <td> </td> <td> </td> </tr> <tr> <td> </td> <td> </td> <td> </td> <td> </td> </tr> <tr> <td> </td> <td> </td> <td> </td> <td> </td> </tr> </tbody> </table> | | | MARK | REVISION | DATE | BY | | | | | | | | | | | | | | | | |
| MARK | REVISION | DATE | BY | | | | | | | | | | | | | | | | | | | |
| | | | | | | | | | | | | | | | | | | | | | | |
| | | | | | | | | | | | | | | | | | | | | | | |
| | | | | | | | | | | | | | | | | | | | | | | |
| | | | | | | | | | | | | | | | | | | | | | | |



MATCH LINE 15+00.00

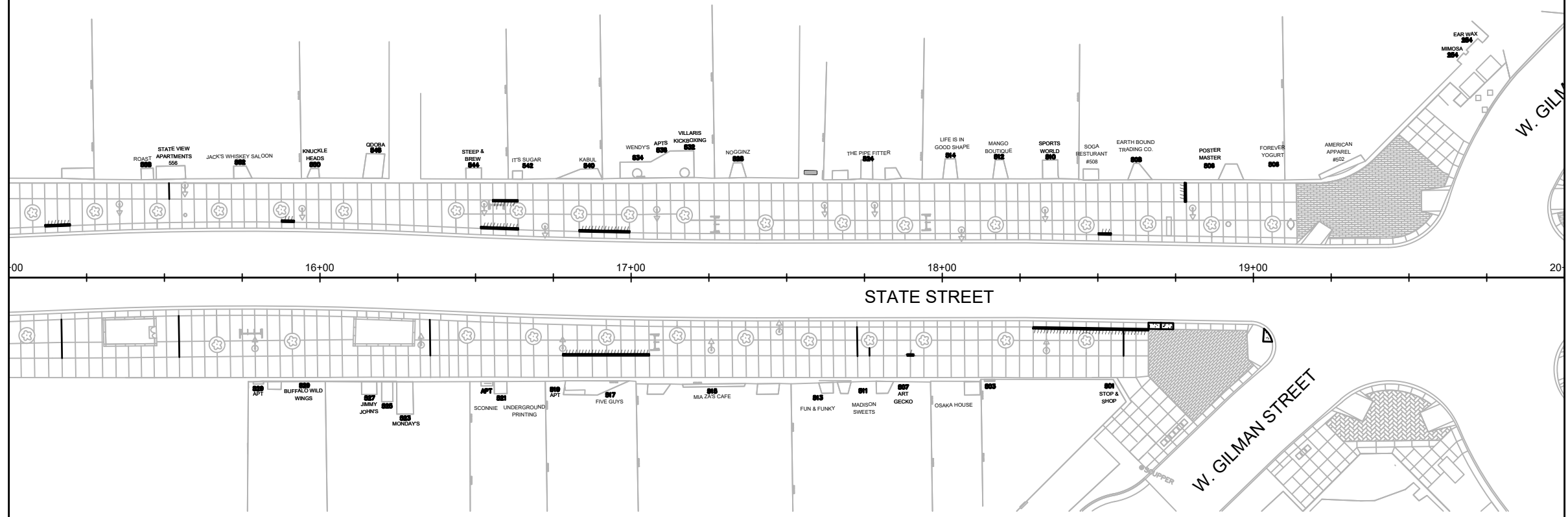


| LEGEND | |
|--------|---|
| | C1 JOINT REPAIR FULL DEPTH (ONE SIDE) |
| | C1 JOINT REPAIR FULL DEPTH (BOTH SIDES) |
| | CAULK JOINT (ADDITIONAL) |
| | C1 CONCRETE SIDEWALK 7-INCH |
| | CONCRETE SIDEWALK 7-INCH |
| | PRECAST CONCRETE PAVERS |
| | CONCRETE SIDEWALK 5-INCH |
| | C1 JOINT REPAIR PARTIAL DEPTH |
| | DETECTABLE WARNING FIELD |

| MARK | REVISION | DATE | BY |
|------|----------|------|----|
| | | | |
| | | | |
| | | | |

13324
 STATE ST SIDEWALK REPAIR & N PARK ST SIDEWALK & TERRACE REPAIR MADISON, WI
 M:\DESIGN\Projects\13324\CAD\Plan Sheets\13324-P Sheets_StateSt.dwg
 CONTRACT NO: 8584
 Scale: #####
 Date: 5/17/2021 10:10 PM
 P-3

CITY OF MADISON
 WISCONSIN
 13324
 P-3



| LEGEND | |
|--------|---|
| | C1 JOINT REPAIR FULL DEPTH (ONE SIDE) |
| | C1 JOINT REPAIR FULL DEPTH (BOTH SIDES) |
| | CAULK JOINT (ADDITIONAL) |
| | C1 CONCRETE SIDEWALK 7-INCH |
| | CONCRETE SIDEWALK 7-INCH |
| | PRECAST CONCRETE PAVERS |
| | CONCRETE SIDEWALK 5-INCH |
| | C1 JOINT REPAIR PARTIAL DEPTH |
| | DETECTABLE WARNING FIELD |



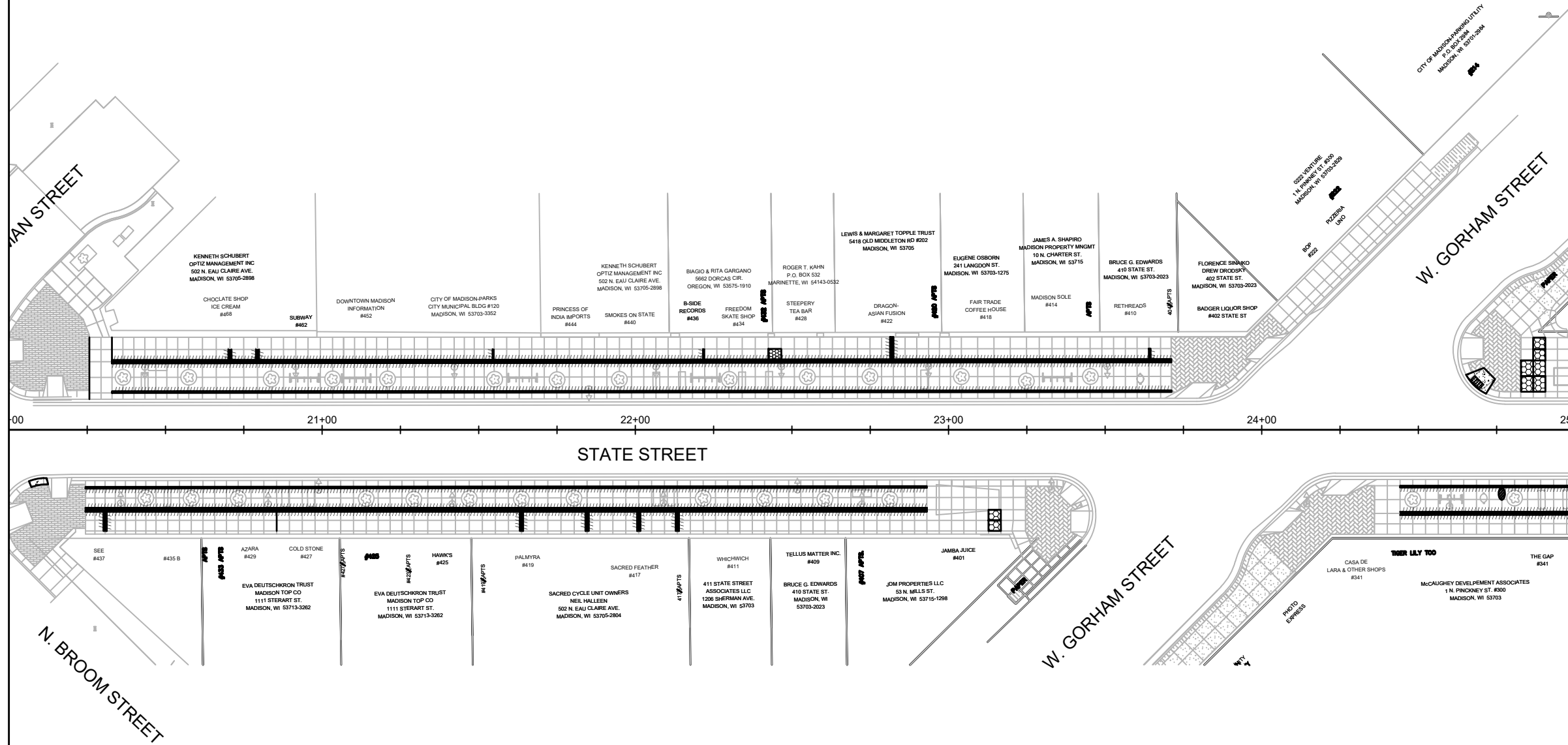
MATCH LINE 20+00.00

| MARK | REVISION | DATE | BY |
|-------|--------------------|--------------|-----|
| 13324 | 5/17/2021 10:11 PM | Scale: ##### | P-4 |

13324
 STATE ST SIDEWALK REPAIR & N PARK ST SIDEWALK & TERRACE REPAIR MADISON, WI
 CONTRACT NO: 8584
 M:\DESIGN\Projects\13324\CAD\Plan Sheets\13324-P Sheets_StateSt.dwg



13324
 P-4



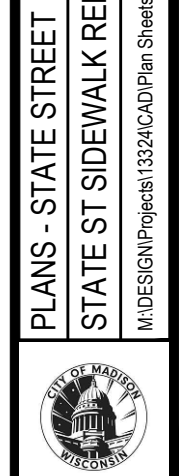
MATCH LINE 25+00.00

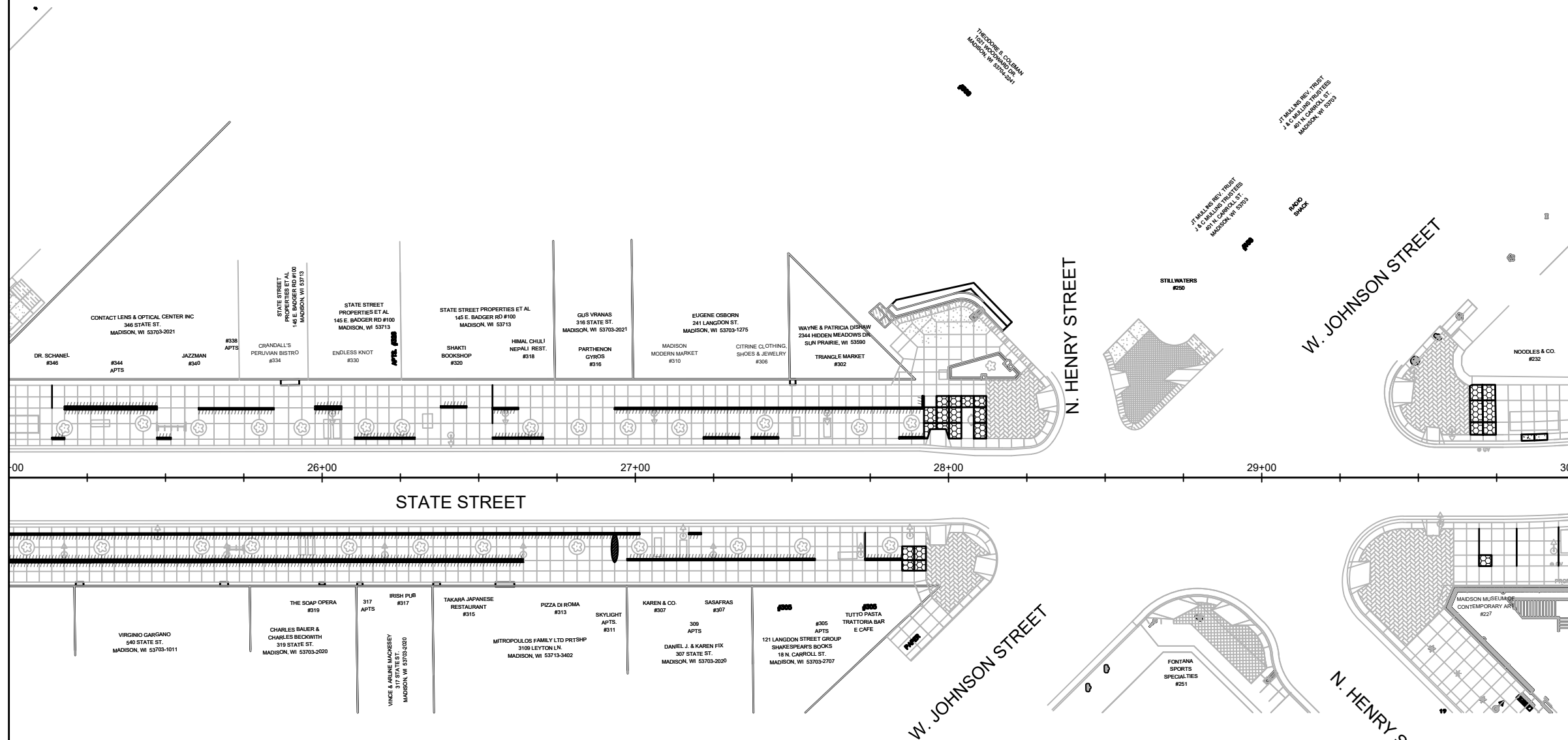
| LEGEND | |
|--------|---|
| | C1 JOINT REPAIR FULL DEPTH (ONE SIDE) |
| | C1 JOINT REPAIR FULL DEPTH (BOTH SIDES) |
| | CAULK JOINT (ADDITIONAL) |
| | C1 CONCRETE SIDEWALK 7-INCH |
| | CONCRETE SIDEWALK 7-INCH |
| | PRECAST CONCRETE PAVERS |
| | CONCRETE SIDEWALK 5-INCH |
| | C1 JOINT REPAIR PARTIAL DEPTH |
| | DETECTABLE WARNING FIELD |

| MARK | REVISION | DATE | BY |
|------|----------|------|----|
| | | | |
| | | | |
| | | | |

13324
 STATE ST SIDEWALK REPAIR & N PARK ST SIDEWALK & TERRACE REPAIR MADISON, WI
 CONTRACT NO: 8584

PLANS - STATE STREET
 M:\DESIGN\Projects\13324\CAD\Plan Sheets\13324-P Sheets_StateSt.dwg





00 26+00 27+00 28+00 29+00 30

STATE STREET

MATCH LINE 30+00.00

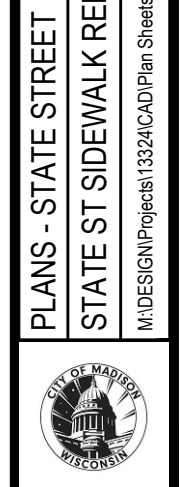
| LEGEND | |
|--------|---|
| | C1 JOINT REPAIR FULL DEPTH (ONE SIDE) |
| | C1 JOINT REPAIR FULL DEPTH (BOTH SIDES) |
| | CAULK JOINT (ADDITIONAL) |
| | C1 CONCRETE SIDEWALK 7-INCH |
| | CONCRETE SIDEWALK 7-INCH |
| | PRECAST CONCRETE PAVERS |
| | CONCRETE SIDEWALK 5-INCH |
| | C1 JOINT REPAIR PARTIAL DEPTH |
| | DETECTABLE WARNING FIELD |



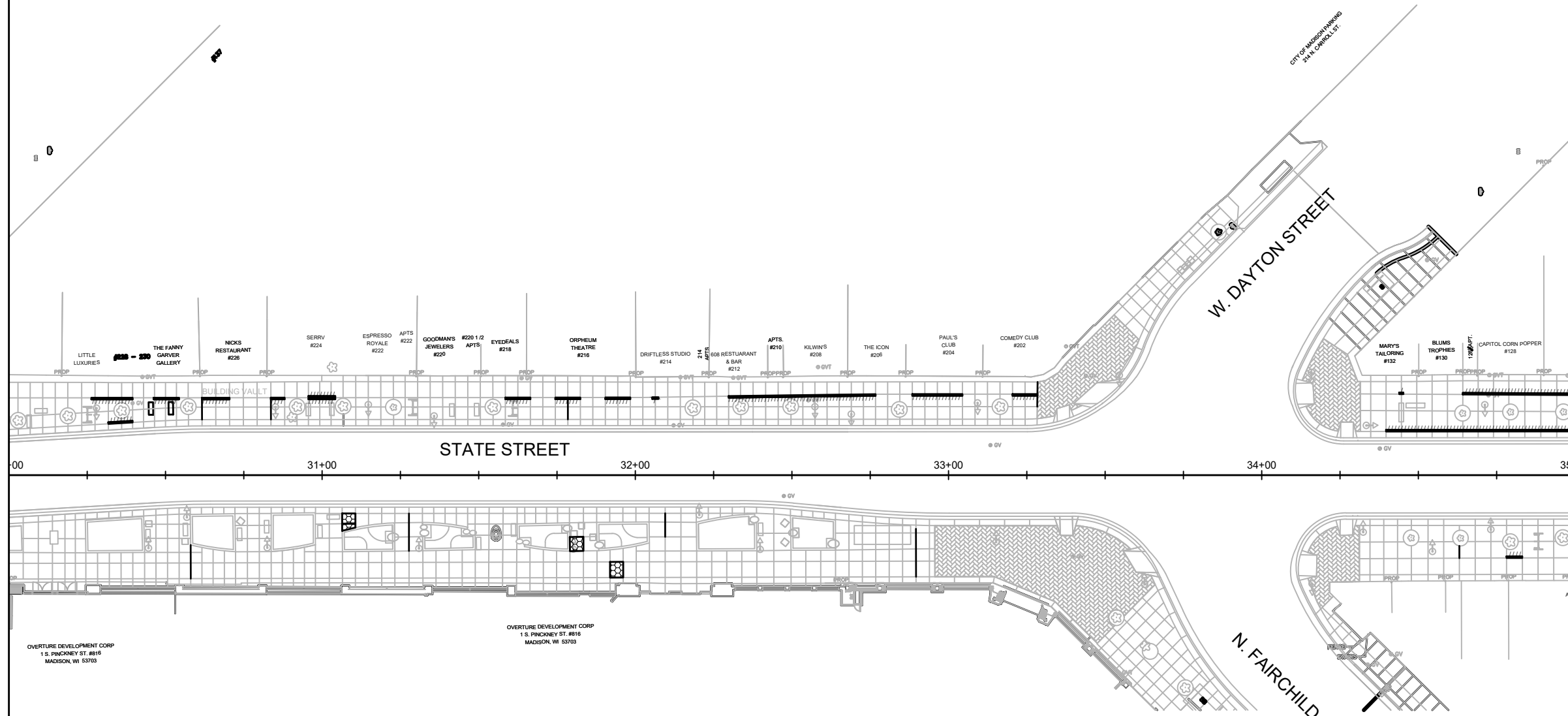
| MARK | REVISION | DATE | BY |
|------|----------|------|----|
| | | | |
| | | | |
| | | | |
| | | | |

13324
 STATE ST SIDEWALK REPAIR & N PARK ST SIDEWALK & TERRACE REPAIR MADISON, WI
 CONTRACT NO: 8584

PLANS - STATE STREET
 M:\DESIGN\Projects\13324\CAD\Plan Sheets\13324-P Sheets_StateSt.dwg



Designed By: FBEG Date: 5/17/2021 10:11 PM
 Scale: #####
 P-6



00 31+00 32+00 33+00 34+00 35

MATCH LINE 35+00.00

LEGEND

- C1 JOINT REPAIR FULL DEPTH (ONE SIDE)
- C1 JOINT REPAIR FULL DEPTH (BOTH SIDES)
- CAULK JOINT (ADDITIONAL)
- C1 CONCRETE SIDEWALK 7-INCH
- CONCRETE SIDEWALK 7-INCH
- PRECAST CONCRETE PAVERS
- CONCRETE SIDEWALK 5-INCH
- C1 JOINT REPAIR PARTIAL DEPTH
- DETECTABLE WARNING FIELD

OVERTURE DEVELOPMENT CORP
1 S. PINKNEY ST. #816
MADISON, WI 53703

OVERTURE DEVELOPMENT CORP
1 S. PINKNEY ST. #816
MADISON, WI 53703

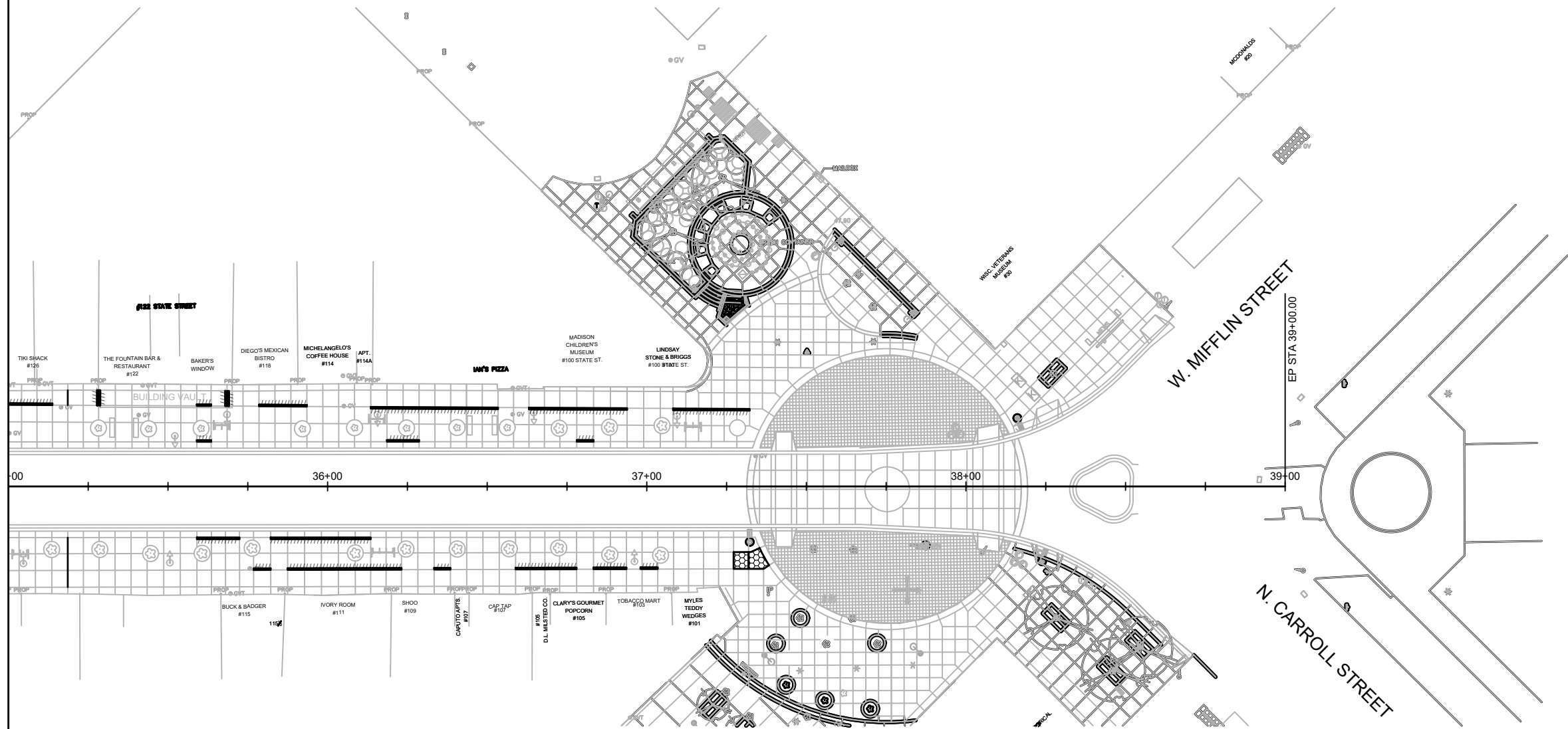


| | | | |
|-------------------|-----------|--------------------------|--------------|
| MARK | REVISION | DATE | BY |
| 13324 | 5/17/2021 | 10:11 PM | Scale: ##### |
| Designed By: FBEC | | Date: 5/17/2021 10:11 PM | |
| 13324 | | P-7 | |

13324
 STATE ST SIDEWALK REPAIR & N PARK ST SIDEWALK & TERRACE REPAIR MADISON, WI
 CONTRACT NO: 8584
 M:\DESIGN\Projects\13324\CAD\Plan Sheets\13324-P Sheets_StateSt.dwg



13324
 P-7



| LEGEND | |
|--------|---|
| | C1 JOINT REPAIR FULL DEPTH (ONE SIDE) |
| | C1 JOINT REPAIR FULL DEPTH (BOTH SIDES) |
| | CAULK JOINT (ADDITIONAL) |
| | C1 CONCRETE SIDEWALK 7-INCH |
| | CONCRETE SIDEWALK 7-INCH |
| | PRECAST CONCRETE PAVERS |
| | CONCRETE SIDEWALK 5-INCH |
| | C1 JOINT REPAIR PARTIAL DEPTH |
| | DETECTABLE WARNING FIELD |



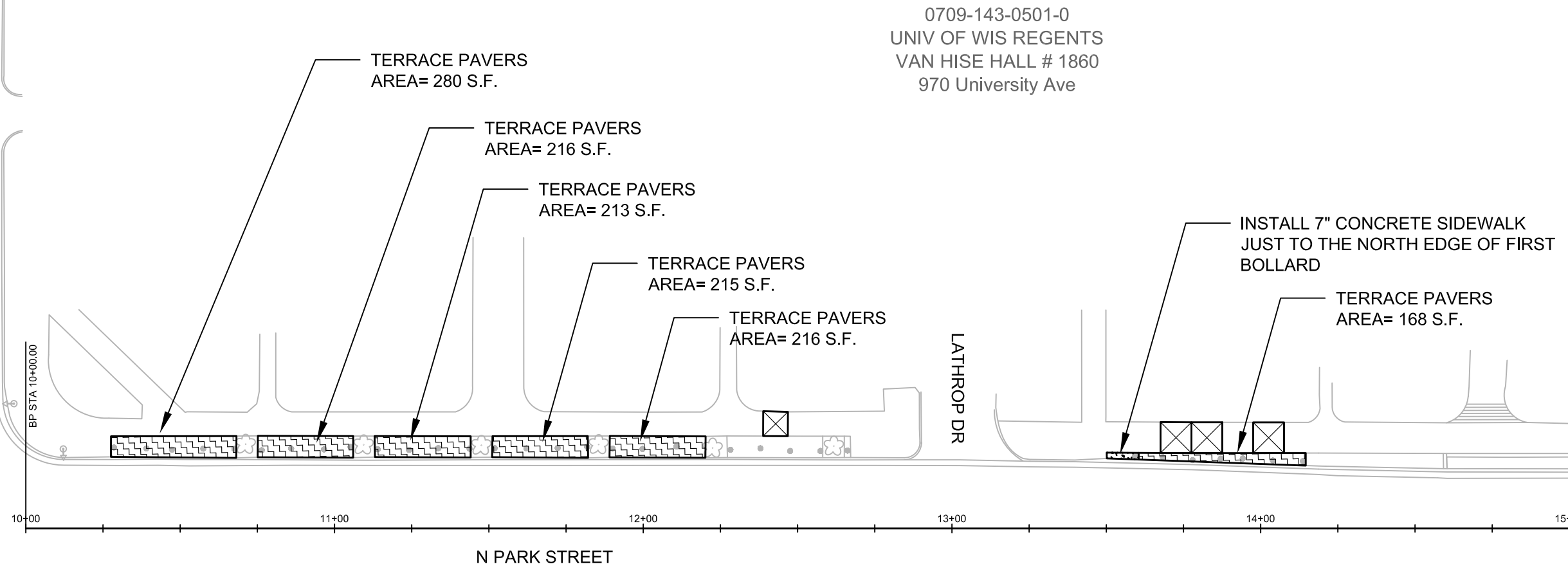
| MARK | REVISION | DATE | BY |
|------|----------|------|----|
| | | | |
| | | | |
| | | | |

13324
 STATE ST SIDEWALK REPAIR & N PARK ST SIDEWALK & TERRACE REPAIR MADISON, WI
 M:\DESIGN\Projects\13324\CAD\Plan Sheets\13324-P Sheets_StateSt.dwg
 CONTRACT NO: 8584
 13324
 Designed By: FBEG Date: 5/17/2021 10:11 PM Scale: #####
 P-8



13324
 P-8

UNIVERSITY AVENUE



0709-143-0501-0
 UNIV OF WIS REGENTS
 VAN HISE HALL # 1860
 970 University Ave

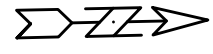
0709-232-0501-1
 UNIV OF WIS REGENTS
 VAN HISE HALL # 1860
 800 University Ave

- REMOVAL OF EXISTING PAVERS TO BE PAID FOR UNDER BID ITEM NUMBER 20323- REMOVE CONCRETE SIDEWALK AND DRIVE
- EXISTING CONCRETE BOLLARDS IN THE TERRACE AREA SHALL REMAIN IN PLACE

LEGEND

| | |
|--|------------------------------|
| | C1 JOINT REPAIR (ONE SIDE) |
| | C1 JOINT REPAIR (BOTH SIDES) |
| | CAULK JOINT (ADDITIONAL) |
| | C1 CONCRETE SIDEWALK 7-INCH |
| | CONCRETE SIDEWALK 7-INCH |
| | PRECAST CONCRETE PAVERS |
| | CONCRETE SIDEWALK 5-INCH |

MATCH LINE 15+00.00

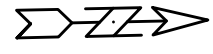


| | | | | | | | |
|---|--|-------------|-------------------|-------|-------|-------|-------|
| 13324 | 13324 | 13324 | 13324 | 13324 | 13324 | 13324 | 13324 |
| PLANS - N PARK STREET | STATE ST SIDEWALK REPAIR & N PARK ST SIDEWALK & TERRACE REPAIR | MADISON, WI | CONTRACT NO: 8584 | 13324 | 13324 | 13324 | 13324 |
| M:\DESIGN\Projects\13324\CAD\Plan Sheets\13324-P Sheets_StateS.dwg Design By: FBEG Date: 5/13/2021 9:17 AM Scale: ##### MARK REVISION DATE BY P-9 | | | | | | | |
| | | | | | | | |
| 13324 P-9 | | | | | | | |

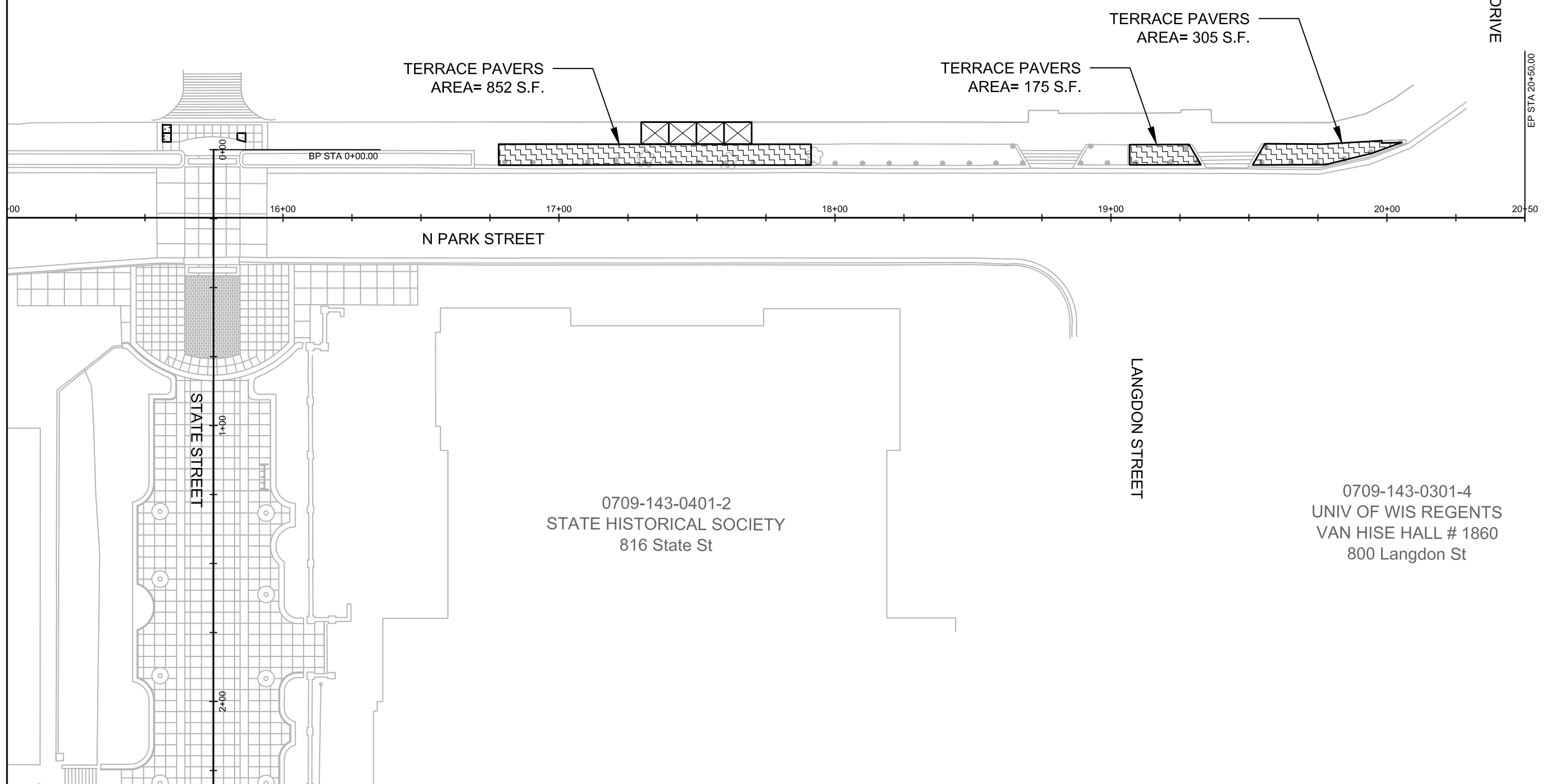
- REMOVAL OF EXISTING PAVERS TO BE PAID FOR UNDER BID ITEM NUMBER 20323- REMOVE CONCRETE SIDEWALK AND DRIVE
- EXISTING CONCRETE BOLLARDS IN THE TERRACE AREA SHALL REMAIN IN PLACE

0709-143-0501-0
 UNIV OF WIS REGENTS
 VAN HISE HALL # 1860
 970 University Ave

| LEGEND | |
|--------|------------------------------|
| | C1 JOINT REPAIR (ONE SIDE) |
| | C1 JOINT REPAIR (BOTH SIDES) |
| | CAULK JOINT (ADDITIONAL) |
| | C1 CONCRETE SIDEWALK 7-INCH |
| | CONCRETE SIDEWALK 7-INCH |
| | PRECAST CONCRETE PAVERS |
| | CONCRETE SIDEWALK 5-INCH |



MATCH LINE 15+00.00



OBSERVATORY DRIVE

EP STA 20+50.00

0709-143-0401-2
 STATE HISTORICAL SOCIETY
 816 State St

LANGDON STREET

0709-143-0301-4
 UNIV OF WIS REGENTS
 VAN HISE HALL # 1860
 800 Langdon St

| | | | | | |
|---|--|-------------|--------------|-------|-------|
| 13324 | 13324 | 13324 | 13324 | 13324 | 13324 |
| PLANS - N PARK STREET | STATE ST SIDEWALK REPAIR & N PARK ST SIDEWALK & TERRACE REPAIR | MADISON, WI | CONTRACT NO: | 8584 | P-10 |
| M:\DESIGN\Projects\13324\CAD\Plan Sheets\13324-P Sheets_StateSt.dwg | | | | | |
| | | | | | |
| 13324 P-10 | | | | | |

GENERAL ELECTRICAL NOTES:

1. ALL LOCATIONS ARE APPROXIMATE, THE TRAFFIC ENGINEER SHALL APPROVE FINAL LOCATIONS, INCLUDING SETBACK, IN THE FIELD, AFTER CONTRACTOR SURVEYS STAKING. THE CONTRACTOR SHALL NOTIFY GRETCHEN AVILES PINEIRO (GAVILESPINEIRO@CITYOFMADISON.COM), AT LEAST 24HOURS IN ADVANCE OF NEEDING BASE LOCATION MARKED.
2. BASES INSTALLED IN TERRACE SHALL BE 4' FROM FACE OF CURB UNLESS OTHERWISE NOTED, SUBJECT TO NOTE 1 ABOVE.
3. THE CONTRACTOR SHALL DO ALL WORK IN ACCORDANCE WITH "CITY OF MADISON STANDARD SPECIFICATIONS FOR PUBLIC WORKS CONSTRUCTION, LATEST EDITION" AND ADDEMDUMS THERETO. cityofmadison.com/business/pw/specs.cfm
4. THE CONTRACTOR SHALL CALL TROY VANT (395-1975) AT THE TRAFFIC ENGINEERING SHOP AT LEAST 24-HOURS IN ADVANCE OF REMOVING BASE FOR SL 1184. CITY TE SHALL BE PRESENT DURING REMOVAL.
5. THE CONTRACTOR SHALL CALL TROY VANT (395-1975) AT THE TRAFFIC ENGINEERING SHOP AT LEAST 24-HOURS IN ADVANCE OF POURING BASES OR BURYING CONDUIT TO ARRANGE FOR INSPECTION. ANY WORK COMPLETED WITHOUT INSPECTION IS SUBJECT TO REJECTION.
6. THE CONTRACTOR SHALL ARRANGE FOR PICKUP OF THE FOLLOWING CITY MATERIALS:
1" X 40" ANCHOR BOLTS: 1 SET OF 4 FOR TYPE LB-3 BASES

SL 1184
CONTACT CITY TE SHOP (608-395-1975) 24 HOURS PRIOR TO NEEDING POLE, ARM, FIXTURE & WIRE REMOVED. CITY TE WILL RE-INSTALL POLE, ARM, FIXTURE & WIRE ONCE WORK IS COMPLETED.

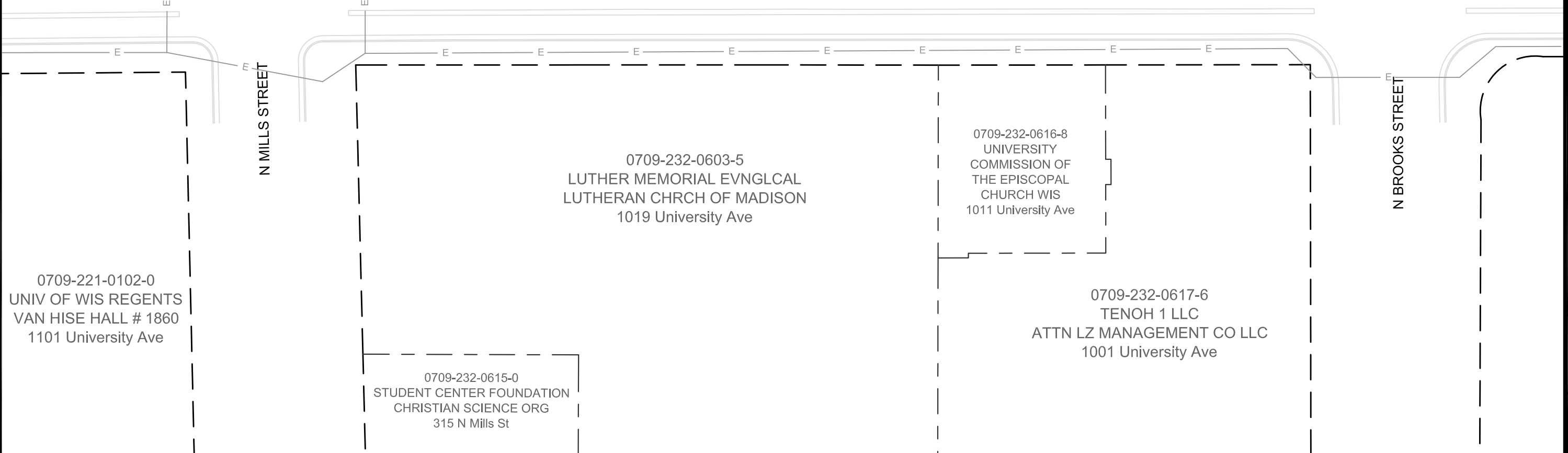
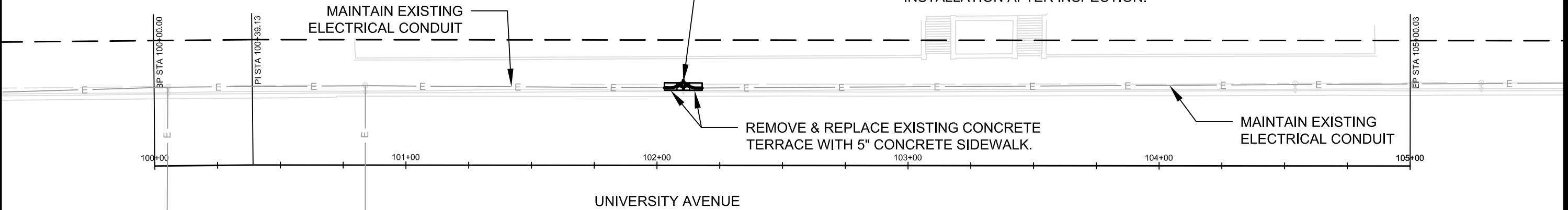
REMOVE EXISTING SL 1184 BASE. EXCAVATE ADDITIONAL 18" IN DEPTH. COST FOR ADDITIONAL EXCAVATION SHALL BE CONSIDERED INCIDENTAL TO ITEM 60421. CITY TE SHALL BE PRESENT TO INSPECT AREA DURING BASE REMOVAL. CONTACT CITY TE SHOP (608-395-1975) AT LEAST 24 HOURS PRIOR TO REMOVAL TO COORDINATE.

0709-143-0501-0
UNIV OF WIS REGENTS
VAN HISE HALL # 1860
970 University Ave

INSTALL 18" IN DEPTH OF CRUSHED AGGREGATE BASE COURSE, GRADATION NO. 3, PAID UNDER ITEM 40102 & INSTALLED ACCORDING TO STANDARD SPEC ARTICLE 401.

INSTALL NEW LB-3 BASE IN SAME LOCATION AS EXISTING SL 1184. CONTACT ENGINEER TO APPROVE STAKED LOCATION. OFFSET/MODIFIED BASE MAY BE REQUIRED AFTER REMOVAL INSPECTION. MATCH CONDUIT IN/OUT OF NEW BASE TO EXISTING 2" CONDUIT (FIELD VERIFY SIZE).

REMOVE, STORE & REINSTALL STAPLE RAILINGS. THIS WORK IS CONSIDERED INCIDENTAL TO THE BASE INSTALLATION - ITEM 60403 OR 60409, DEPENDING WHICH IS SELECTED FOR INSTALLATION AFTER INSPECTION.



| | | | | | | |
|--|-------|-------|------|----------|------|----|
| PLANS - UNIVERSITY AVENUE | 13324 | 13324 | MARK | REVISION | DATE | BY |
| STATE ST SIDEWALK REPAIR & N PARK ST SIDEWALK & TERRACE REPAIR MADISON, WI | | | | | | |
| City of Madison WISCONSIN | | | | | | |
| 13324 | | | | | | |
| P-11 | | | | | | |
| CONTRACT NO: 8584 | | | | | | |
| M:\DESIGN\Projects\13324\CAD\Plan Sheets\13324-P Sheets_Univ.dwg | | | | | | |